

# Incauto

TYPE SUP021R - SUP021YR

## OPERATING INSTRUCTIONS

Read these operating instructions carefully before using the machine

## MODE D'EMPLOI

Lire attentivement ce mode d'emploi avant d'utiliser la machine

## INSTRUCCIONES DE USO

Diese Leer atentamente estas instrucciones de uso antes de utilizar la máquina



FOR HOUSEHOLD USE ONLY



Saeco®

ENGLISH

FRANÇAIS

ESPAÑOL

## IMPORTANT SAFEGUARDS

When using electrical appliances, basic safety precautions should always be followed to reduce the risk of fire, electric shock, and/or injury to persons, including the following:

- 1 Read all instructions and information in this instruction book and any other literature included in this carton referring to this product before operating or using this appliance.
- 2 Do not touch hot surfaces. Use handles or knobs.
- 3 To protect against fire, electric shock and personal injury do not immerse cord, plugs or appliance in water or other liquid.
- 4 Close supervision is necessary when any appliance is used by or near children.
- 5 Unplug from outlet when not in use and before cleaning. Allow to cool before putting on or taking off parts, and before cleaning the appliance.
- 6 Do not operate any appliance with a damaged cord or plug or after the appliance malfunctions or has been damaged in any way. Return appliance to the nearest authorized service centre for examination, repair or adjustment.
- 7 The use of accessory attachments not recommended by the appliance manufacturer may result in fire, electric shock or personal injury.
- 8 Do not use outdoors.
- 9 Do not let cord hang over edge of table or counter, or touch hot surfaces.
- 10 Do not place on or near a hot gas or electric burner, or in a heated oven.
- 11 Always turn appliance "OFF", then plug cord into the wall outlet. To disconnect, turn switch to "OFF", then remove plug from wall outlet.
- 12 Do not use appliance for other than intended household use.
- 13 Use extreme caution when using hot steam.

## SAVE THESE INSTRUCTIONS

## CAUTION

This appliance is for household use. Any servicing, other than cleaning and user maintenance, should be performed by an authorized service centre. Do not immerse base in water. To reduce the risk of fire or electric shock, do not disassemble the base. There are no user serviceable parts inside. Repair should be done by authorized service personnel only.

- 1 Check voltage to be sure that the voltage indicated on the nameplate corresponds with your voltage.
- 2 Never use warm or hot water to fill the water tank. Use cold water only.
- 3 Keep your hands and the cord away from hot parts of the appliance during operation.
- 4 Never clean with scouring powders or hard implements. Simply use a soft cloth dampened with water.
- 5 For optimal taste of your coffee, use purified or bottled water. Periodic descaling is still recommended every 2-3 months.

## INSTRUCTIONS FOR THE POWER SUPPLY CORD

- A A short power-supply cord is provided to reduce risks of getting tangled up or tripping over a longer cord.
- B Longer extension cords are available and may be used if care is exercised in their use.
- C If a long extension cord is used:
  - 1 the marked electrical rating of the extension cord should be at least as great as the electrical rating of the appliance.
  - 2 if the appliance is of the grounded type, the extension cord should be a grounding type
  - 3 the cord does not hang from the table to avoid the risk of getting caught up in it.

## GENERAL INFORMATION

This coffee machine is ideal for preparing espresso coffee either with coffee beans or preground coffee and also features a device for dispensing steam and hot water. This elegantly styled machine is designed for household use only. It is not suitable for continuous professional-type use.

**Warning. The manufacturer shall accept no liability for damage or injury caused by:**

- improper use or use for other than the intended purposes;
- repairs carried out by anyone other than an authorized service center;
- tampering with the power cord;
- tampering with any machine component;
- use of spare parts and accessories other than those supplied by the manufacturer;
- mineral or scale build up and / or freezing damage.

The warranty will be voided in such cases.



### *TO FACILITATE INTERPRETATION*

A warning triangle draws attention to the instructions that are important for user safety. Please carefully abide by these instructions to avoid serious injury!

### *HOW TO USE THESE OPERATING INSTRUCTIONS*

Keep these operating instructions in a safe place and make them available to anyone else who should use the coffee machine. For further information or an explanation of problems not completely or sufficiently addressed in these instructions, contact an authorized service center.

## TECHNICAL SPECIFICATIONS

• Voltage rating	See rating plate on appliance
• Power rating	See rating plate on appliance
• Casing material	Metal
• Size (w x h x d)	10.4 x 14.2 x 15.7 in / 265 x 360 x 400 mm
• Weight	24.25 lbs / 11 kg
• Cord length	4 ft / 1200 mm
• Control panel	Front
• Water tank (removable)	67.5 oz / 2 lit.
• Power supply	See rating plate on appliance
• Pump pressure (bars)	15
• Boiler	Stainless steel
• Coffee container capacity	1/3 lb / 180 g. of coffee beans
• Safety devices	Boiler pressure safety valve safety thermostat

Subject to engineering and manufacturing changes as warranted by technological developments.

Machine in conformity with European Directive 89/336/EEC (Italian Legislative Decree 476 of 04/12/92) concerning electromagnetic compatibility.

The machine complies to American regulations (c UL us) FCC Part. 15 relative to electromagnetic compatibility.

**IN THE EVENT OF AN EMERGENCY**

Immediately unplug the appliance.

**THE APPLIANCE MAY ONLY BE USED**

- Indoors.
- To prepare coffee, dispense hot water, froth milk or heat beverages using steam.
- For household use.
- By adults in full control of their physical and mental capacities.

**NEVER USE THE APPLIANCE**

For purposes other than those indicated above to avoid hazards. Never place any substances in the containers other than those specified in the instruction manual. When you fill a container, make sure all nearby containers are closed. Fill the water tank only with fresh drinking water: hot water and/or other liquids may damage the machine. Do not use carbonated water. The coffee grinder may be adjusted only while it is running. Do not introduce your fingers or any material other than coffee beans into the coffee grinder. Before attempting to access the inside of the coffee grinder, switch OFF the machine and remove the plug from the electric socket. Do not put coffee beans or instant coffee into the ground coffee container.

**POWER SUPPLY**

Connect the coffee machine to a suitable electric socket. The voltage must match the voltage specified on the appliance rating plate.

**INSTALLATION**

- Choose a perfectly level supporting surface. Do not place on a hot surface!
- Maintain a distance of 4 in / 10 cm from walls and electric or gas burners.
- Do not keep at temperatures below 32 °F / 0 °C; the appliance may be damaged by freezing.
- The power outlet must be accessible at all times.
- The power cord must not be damaged, secured with clamps, placed on very hot surfaces etc.
- Do not let the power cord hang loosely (Warning: danger of tripping or of causing the appliance to fall).
- Should the power cable be damaged, it must be replaced by the manufacturer or his customer service department.
- Do not use the power cord to carry or pull the coffee machine.

**HAZARDS**

- The appliance must not be used by children or by individuals unacquainted with the operating instructions.
- The appliance is dangerous for children. If left unattended it must be switched off.
- Do not leave the materials used to pack the appliance within children's reach.
- Do not direct a jet of hot steam and/or hot water toward yourself or others: danger of scalding.
- Do not introduce any objects through the openings in the appliance (Electrical hazard!).
- Do not touch the plug when your hands or feet are wet. Do not unplug the appliance by pulling on the power cord.
- Warning: contact with hot water, steam or and hot water/steam nozzle may cause burns.

**FAULTS**

- Do not use the appliance if it malfunctions or you suspect damage, e.g. after a fall.
- Repairs must be performed by an authorized service center.
- Do not use an appliance with a defective power cord. The cord may only be replaced by a service center (Electrical hazard!).
- Switch off the appliance before opening the service door. Danger of scalding!

**CLEANING**

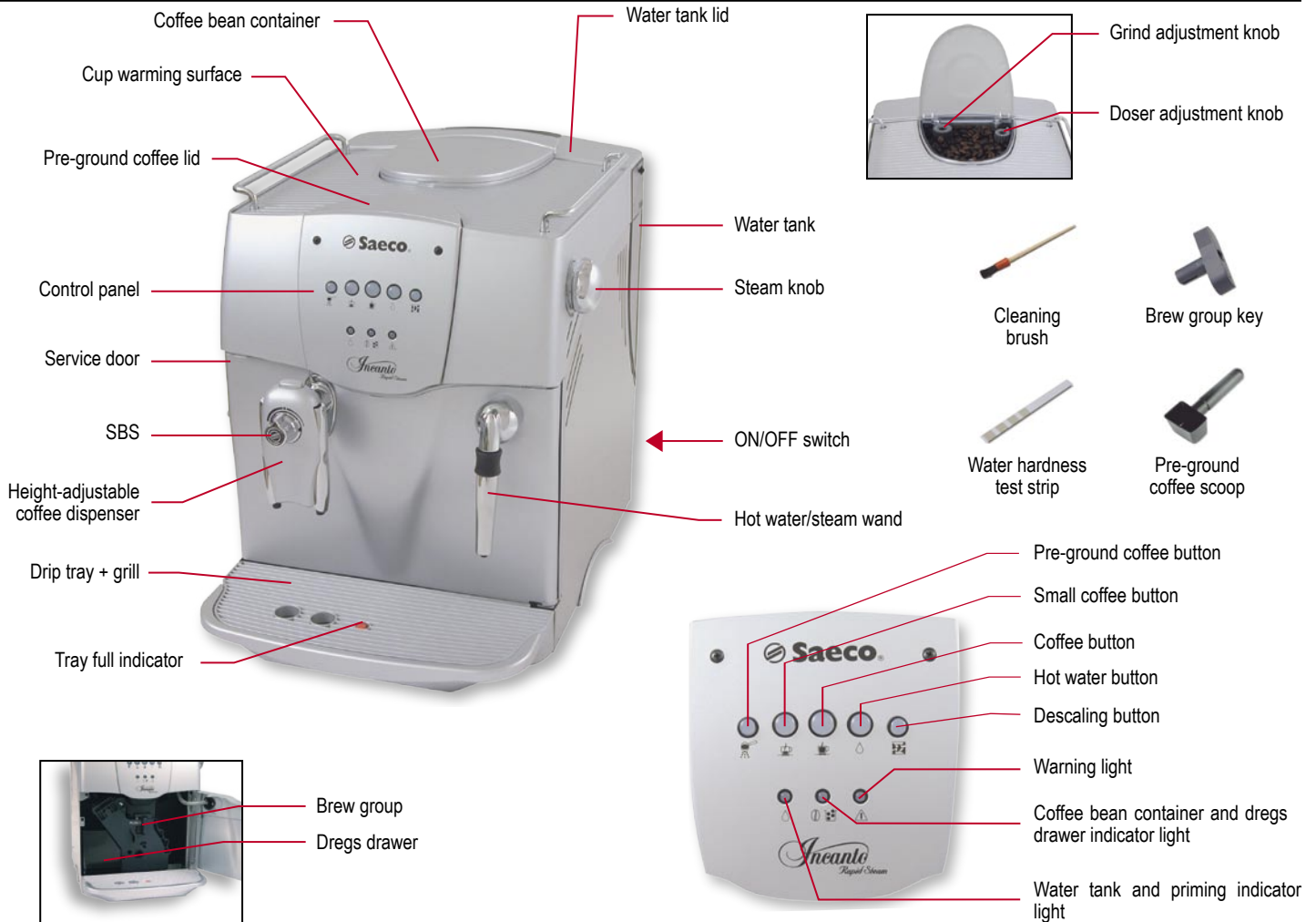
- Before cleaning the appliance, unplug it and allow it to cool down.
- Avoid exposing the appliance to splashes of water. Do not immerse it in water.
- Do not dry machine components in a conventional or microwave oven.

**SPARE PARTS**

To guarantee safety, you should use only original spare parts and accessories.

**DISPOSAL**

- The packing materials can be recycled.
- Appliance: unplug the appliance and cut the power cord.
- Deliver the appliance and power cord to a service center or public waste disposal facility.



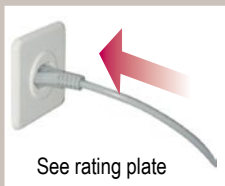
The messages displayed by the machine during operation are shown on page 14.



Fill the coffee bean container with coffee beans.



Fill the tank with fresh water.



See rating plate



Move the ON/OFF switch to "I" to turn on the machine.



The machine is warming up; lights are flashing.



Place a container under the steam wand.



Press the hot water button.



Turn the knob counterclockwise to start priming the machine.



Wait until a steady stream of water flows out from the nozzle.



Turn the knob clockwise to stop the priming process.



Remove the container.



Press the water button again.



The machine is ready for use.

**Note:** Prime the machine during initial set up, if the machine has not been used for several days, after refilling the water tank, or any time the priming indicator light flashes.





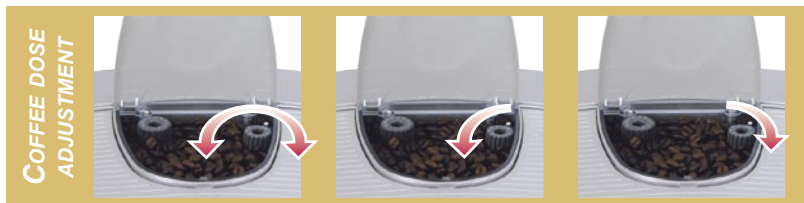
**COFFEE GRINDER ADJUSTMENT**

The grinder can be adjusted by means of the knob.

Turn counterclockwise for a finer grind. Coffee flows out more slowly.

Turn clockwise for a coarser grind. Coffee flows out more quickly.

Coffee dose adjustment - You must adjust the dose before dispensing coffee. This adjustment will have an immediate effect on the next cup of coffee brewed.



**COFFEE DOSE ADJUSTMENT**

You can adjust the quantity of coffee to be ground per cup from 6 (-) o 9 (+) grams.

Stronger coffee (towards +).

Weaker coffee (towards -).

**For machines provided with SBS only.** - To adjust the strength and consistency of brewed coffee. The adjustment can also be made while brewing the coffee. This adjustment will have an immediate effect on the coffee brewed.



**SBS**

Strong black coffee. Espresso coffee. Rich espresso coffee.

**!** Adjustment may be made only while the burr coffee grinder is operating and in increments of 2. Extreme settings not recommended.

Use coffee bean blends for espresso coffee makers. If you do not obtain the desired result, try using a different blend. Store coffee in a cool place, in an air tight container. Do not use frozen beans. You will note a change after dispensing 3 - 4 cups of coffee.

If you set the grinder on too fine a grind (knob turned all the way counterclockwise) and the SBS control on "rich" (toward the right), coffee may flow out in a slow trickle or not at all.

**BIG CUPS**

To return the coffee dispenser to the original position, pull towards you until it clicks in place.

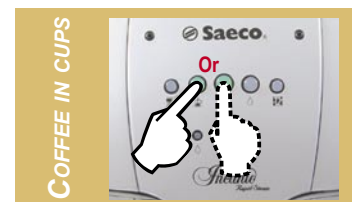


**BIG CUPS**

To use big cups, press the button on the top of the coffee dispenser and push backwards towards the door of the machine.

**COFFEE IN CUPS**

To adjust the quantity of coffee dispensed to the size of your cups.



**COFFEE IN CUPS**

release the button; the machine is now programmed to dispense the quantity of coffee you have chosen.

Place a cup under the coffee dispenser, press the desired coffee button and **keep it pressed while coffee is being dispensed.**

When the cup has filled to the desired level,

 **Warning! Hot water and steam may cause burns! Direct the steam wand towards the drip tray.**



Make sure that the machine is ready.

Position a warm coffee cup or cups under the coffee dispenser.

Press the desired coffee button .  
Once for 1 cup

Twice for 2 cups or a double shot.

When the machine stops making the coffee, remove the cup or cups.



Position a warm coffee cup under the coffee dispenser.

Select the "Pre-ground Coffee button".

Put one level scoop of espresso pre-ground coffee.  
**MAX 1 SCOOP PER CUP**

Press the desired coffee button.

When the machine stops making the coffee, remove the cup.



Place a container under the steam wand.

Press the hot water .

Turn the knob counter-clockwise to start dispensing. Close the knob when finished.

Remove the container.

Press the button to restore the machine to normal operation.



**Warning! Hot water and steam may cause burns! Direct the steam wand towards the drip tray.**



**CAPPUCCINO**

Fill a cup to 1/3 with cold milk.

Place a container under the steam wand. Open the knob to discharge any residual water.

When only steam comes out, close the knob. Remove the container.

Position the cup containing milk under the steam wand.

Open the knob to release steam.



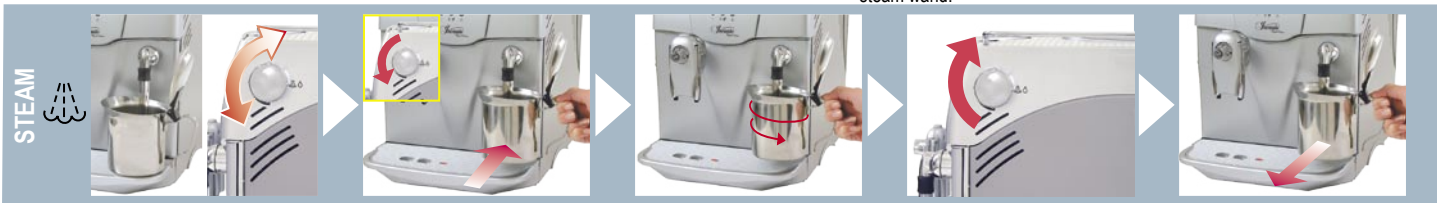
Move the cup in a circular fashion to heat the milk evenly.

After frothing the milk, close the knob.

Remove the cup and position it under the coffee dispenser.

Remove cover on pannarello frothing attachment, wash under tap. Wipe spout left on steam wand with wet cloth. Run a little water through the steam wand to remove milk residue from the inside of the steam wand.

Dispense coffee into the cup to prepare a delicious cappuccino.



**STEAM**

Open the knob to discharge any residual water. Close the knob.

Place the cup under the steam wand. Open the knob.

Heat by moving in circles.

Close the knob.

Remove the container.



**Warning! Never use vinegar as a descaling agent.** You can use any commercially available non-toxic, non-harmful descaling product for coffee machines. We recommend using a Saeco descaling agent.

Descaling is necessary every 2-3 months, when you observe a diminished flow of water, reduced steam pressure or when the machine signals that descaling is necessary. The machine must be on; it automatically controls the distribution of the descaling solution.

DESCALING



When the machine needs descaling, the indicator light will flash



Fill the water tank with the descaling solution.



Place a large container under the steam wand.



Press the indicator light for 5 seconds. The indicator light will come on steady.



Open the knob. The descaling process starts.



The machine will run the solution at intervals until the water tank is empty.



The lights will flash to signal when descaling is over.



Close the knob.



Remove the container.



Rinse out the tank and fill it with fresh water.



Place a large container under the steam wand.



Open the knob to rinse.



When no water is left, turn the knob to close the valve.



Remove the container.

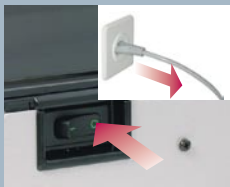


**If the descaling cycle is interrupted, the water tank and internal machine circuits must be rinsed.**

**!** Do not dry the machine and/or its components in a microwave and/or conventional oven.

**!** Do not immerse the machine in water and do not place any of its components in a dishwasher.

**BASIC CLEANING**



Turn the machine off. Unplug the machine.



Wash the water tank. Wash the filter inside it.



Remove the drip tray, empty it out and wash it with warm soapy water.



Remove the dregs drawer, empty it out and wash it.



Remove cover on pannarello frothing attachment, wash under tap. Wipe spout left on steam wand with wet cloth. When necessary, unscrew complete assembly and wash under tap with warm soapy water.



Use the brush to clean the ground coffee dispenser.



Remove the coffee dispenser and wash it with water.

**!** The machine, its components and the brew unit must be cleaned at least once a week.



**BREW GROUP**

Open the front door. Remove the drip tray and grill. Remove the dregs drawer / waste box.



Press the PUSH button to release the brew group.



Unscrew the upper filter screen using the key provided and wash it with warm water.



Put the filter back in place when clean and hand tighten.



Wash the brew group, dry it and put it back in place. Do not press the "PUSH" button.



Put all machine components back in position. Close the door.

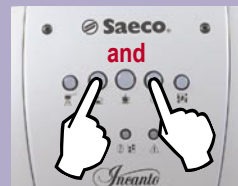
The following programming features can be changed to suit your needs.

**PROGRAMMING START**

Procedure for accessing the programming mode.



Turn the machine off.



Press the small coffee button and the hot water button, and simultaneously, turn the machine on.



**WATER HARDNESS**

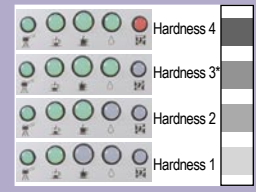
The hardness of tap, bottled and filtered water may vary depending on the region, brand and filter used. For this reason, the appliance can be set according to the water hardness to be used, expressed on a scale of 1 to 4 (1 = soft and 4 = hard).



Dip the strip in water for 1 second. Check how many squares change color.



Press the button.

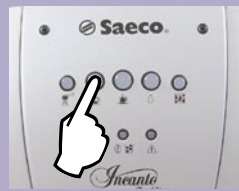


The degree of hardness will be signaled by the indicator lights.

The appliance is factory set on a hardness value of 3\*. The setting should be adjusted according to the level of water hardness to be used with the machine.

**RINSING**

When this function is enabled, the internal machine circuits will be rinsed immediately after the warming-up phase to ensure that coffee is prepared with fresh water only.



Press the button to set the function.



Rinsing activated (ON).



Rinsing deactivated (OFF).

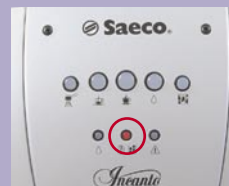
In all new appliances this function has already been activated at the factory.

**PRE-BREWING**

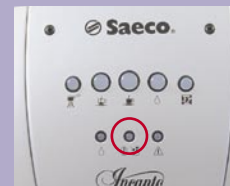
With the pre-brewing process the coffee is slightly moistened before actual brewing. This pre-infusion brings out the full aroma and flavor of the coffee. It is possible to choose either "ON" or "OFF".



Press the button to set the function.



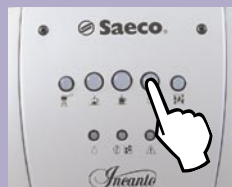
Pre-brewing activated (ON).



Pre-brewing deactivated (OFF).

**PRE-GRINDING**

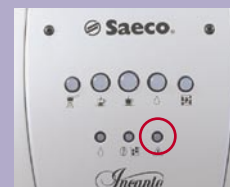
With the pre-grinding process the machine grinds twice: the first time for the cup of coffee selected and the second time for the subsequent cup of coffee (not yet selected). This function is useful when you want to reduce the time necessary to brew several cups in sequence (e.g. while entertaining guests or during a party).



Press the button to set the function.



Pre-grinding activated (ON).



Pre-grinding deactivated (OFF).

**END PROGRAMMING**

To exit programming mode and activate all the changes made to the settings.



Turn the machine off.



Turn the machine back on. The changes will be activated.

The control panel and indicator lights will assist you with the functioning and maintenance of the unit.



Flashing

Descalc the machine



Steadily lit

Fill the water tank with fresh water.



Flashing

Prime the machine



Steadily lit

Fill the coffee bean container with coffee beans and press the desired coffee button to start the brewing cycle.



Flashing

Open the door, remove the dregs drawer and empty the used coffee grounds.  
**Important note: the dregs drawer may be emptied only when the machine is ON. The drawer must be removed for at least 5 seconds for the machine to read that the drawer has been emptied. If you empty the drawer with the machine off, you will not be able to dispense coffee the next time you switch the machine on.**



Steadily lit


Put the brew group, drip tray and dregs drawer correctly into place. Close the front door.



Flashing

Coffee grinder motor jammed.  
 Brew group motor jammed.  
 Contact an Authorized Service Center.

PROBLEMS	CAUSES	REMEDIES
The brewing cycle does not start.	No coffee beans.	Refill bean hopper and press desired coffee button.
	No water.	Fill water tank. Message will clear.
	Dredge drawer / waste box is full.	Remove waste box while machine is on. Leave out for 5-10 seconds and put back in machine. Message will clear.
	Brew group missing.	Remove drip tray, waste box and brew group. Put brew group back in machine until securely locks in place, put waste box and drip tray back in and shut service door.
Coffee flows too quickly.	Grind is too coarse.	Adjust the grinder to a finer grind, ex. from 5 to 3. Adjust only while grinder is grinding and only a maximum of 2 settings at a time. It will take 3-4 cups to see results.
	Dose needs to be increased.	Turn doser towards + sign.
Coffee flows too slowly.	Grind is too fine.	Adjust the grinder to a coarser grind, ex. from 5 to 7. Adjust only while grinder is grinding and only a maximum of 2 settings at a time. It will take 3-4 cups to see results.
	Dose needs to be decreased.	Turn doser towards - sign.
	Filter screen in brew group is clogged.	Clean the filter screen using the key provided.

PROBLEMS	CAUSES	REMEDIES
The machine does not turn on.	The machine is not connected to the power supply.	Move the main switch to ON ("I" position).  Check the plug and the power outlet.
The coffee is not hot enough.	The cups are cold.	Warm up the cups on cup warmer or by dispensing a little hot water into the cup and letting it sit for a few seconds.
Only water is dispensed when you select "pre-ground coffee".	No pre-ground coffee has been put into the pre-ground chute.	Select Pre-ground coffee button, put pre-ground coffee into the chute and press the desired coffee button.
	Too much pre-ground coffee put in chute.	Put one level scoop of espresso coffee. Max. 1 cup at a time.
No hot water or steam is dispensed.	The steam wand is clogged.	Clear it with a thin needle or pin.   <b>During this operation, the knob must be closed and the machine must be off.</b>  Then run water through steam wand to make sure unclogged.

PROBLEMS	CAUSES	REMEDIES
Reduced amount of coffee, water and steam coming out of the machine; the machine takes longer to heat.	Lime scale / mineral build up in machine.	Descale the machine. If not done for a long period of time, we recommend doing 2 consecutive cycles.
Unable to clear Descale message.	Descale cycle not complete.	Must completely finish the automatic descaling cycle for the light to clear.
The brew group cannot be removed.	The brew group is out of alignment.	Put waste box and drip tray in position, close door and switch machine on; the brew group will reset into original position.
Water light will not clear.	Machine needs to be primed.	Dispense 3-4 oz of water through the steam wand.
	Steam wand clogged.	Clear steam wand and prime machine.



**INTERNATIONAL GROUP**

**Saeco International Group S.p.A. - Via Panigali, 39  
40041 Gaggio Montano - Bologna - Italy**

**Tel. +39 0534.771.111 - Fax. +39 0534.31025 - <http://www.saeco.com>**